

The Great Schuss

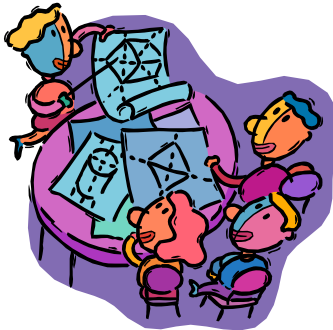
August, 2011

Jan Clark, Editor



August Meeting, Meal and Trip Sign-Ups!

Ski season officially begins in the sweltering heat and humidity of a typical August day in Lexington. Join us at the Racquet Club, Tuesday, August 2nd for a cook-out and 2012 trip sign-ups. If your dues for 2011-12 are paid at or before the meeting the meal will be on us. If not, the cost will be \$5.00. Review the trip offerings in this newsletter and come ready to register for the trip(s) of your choice. Social hour at 6:00, Meeting starts at 7:00.



LSSC Board to Meet August 10th!

The LSSC Board will be meeting August 10th at 6:30 p.m. at the home of Catherine Monzingo, LSSC President.. All Board meetings are open to LSSC membership so if you have issues you would like to bring to the Board, or if you just want to observe, come on by! We generally conclude by 9:00 p.m. Voting is limited to Board members only but input is encouraged by all! Contact Catherine for directions at camonzingo@yahoo.com

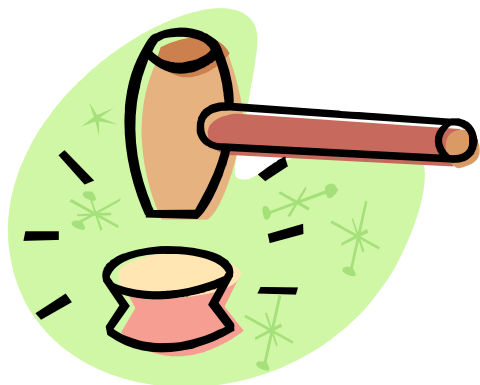
Membership Notes

As of July 16th, I would like to welcome returning members Tommy G., Vicki C., Charles C., Lisle D., Tom D., Linda G., Dixie R.H., Jesse S., and Jim S.. If you have sent me your membership application and your name doesn't appear above, it just means that I haven't received it yet. Look for your name to appear in the next newsletter. And don't be left out. Come to our August 2nd meeting, complete your membership application and pay your \$25 dues. 2011/2012 Members will receive free food. Procrastinators beware, our dues are \$40 after our October meeting. Clearly, there are perks for those who join LSSC early.....free food and less \$\$\$\$\$. Seems kind of like a "no brainer" to me. Do you have friends, co-workers or family who would like to join? New members who sign up for one of our trips will receive a dues waiver their first year making their first year membership "free". Such a deal! Note, if you pay your dues online, you still need to complete a paper membership application and sign our waiver. If you are unable to attend one of our meetings membership applications can be downloaded from the website and sent to the address listed on the application.



Picnic with the Pops...Havana Nights!

LSSC will once again be purchasing two tables at Picnic with the Pops, August 19th in the Meadow at Keeneland. If you are interested, tickets will be \$15 each and available at the August meeting. This year's program is entitled "Havana Nights" and will feature the music of the Emmy-nominated group "Tempo Libre." Members with last names beginning with A-H please bring a meat or other main dish. Members with last names I-P need to bring a desert and members with last names beginning with Q-Z please bring a salad...to share! Please bring a bag chair and your own beverages as well! Join us for a sizzling hot time! Contact Mary Harbour for details and ticket information at mary.harbour@uky.edu.



The Prez Says . . .

Greetings, Lexington Ski & Sports Club members!

Your board has been busy finalizing plans for the 2011-12 ski and snowboard season. This season we are participating in all three OVSC trips: Steamboat (CO), Big Sky (MT) and Garmisch/Partenkirchen (GER). These trips provide the best deals for our membership – better air pricing than we have seen in recent years and the amenities we all enjoy.

To kick off the season, our August 2 membership/sign-up meeting will be another burger cook-out at the Racquet Club Clubhouse grill. (If your dues are paid before or at the meeting, your meal is on LSSC. Guests will pay \$5.) This is always a fun meeting – reconnecting with our ski and snowboard friends and psyching up for the winter relief from the heat.

The board has made some changes to the dues structure. They are \$25 still if paid by the October meeting and then they increase to \$40 through March 31. This is to encourage more timely trip sign ups and help us to budget for the year. Please pass on to your friends who have yet to join LSSC – new members to the club who sign up for a trip will have membership dues waived for the first year of being part of LSSC.

Please remember trip pricing is based on double occupancy rooming and bedding is not guaranteed. While the trip leaders will strive to accommodate bedding and lodging requests, each member signing up with a roommate with whom s/he is willing to share a bed will prevent sore or awkward feelings. As many discovered last season, pricing is based on group rates and the trip cost does increase if we do not have enough participants. Having only selected OVSC trips this season, we will most likely avoid any uplifts for insufficient group numbers. Having selected great destinations, I hope our challenge is getting everyone on the trips!

In addition to trip sign ups tickets to Picnic with the Pops will be available at the August meeting. It's at Keeneland again, which was a great venue last season. We are attending the Friday, August 19 performance and have two tables reserved. It's a Latin theme – hot music for the hot summer.

Big Sky, Montana
March 24-31, 2012
Cost: \$1,349
Land Only: \$834



Package includes:

Round trip airfare from Cincinnati to Billings, MT
7 nights lodging at Big Horn Condominiums
5 day lift ticket at Big Sky Resort
Round trip transfers from Billings to Big Sky
Sunday evening Welcome Reception
Thursday night OVSC Awards Dinner
Mountain picnic
OVSC T-shirt
OVSC trip pin

The Biggest Skiing in America

Big Sky offers instant access some of the most diverse skiing and snowboarding amongst breathtaking vistas in the lower 48. Float down a 2,000 vertical foot, powder filled bowl beneath Lone Peak; bob and weave through the Bavarian Forest; ride the Lone Peak Tram for a bird's eye view of untamed wilderness. You'll find almost twice as many acres as skiers.

Big Sky Mountain

Located 38 miles south of Bozeman (BZN), Big Sky offers three mountains that bear over 85 miles worth of world-class skiing trails. Lone Mountain boasts a shocking 4,350 vertical feet, and is made up of a lot of expert ski terrain. Andesite Mountain is most notably an intermediate mountain, though it also boasts some expert tree runs and a giant half pipe. Flat Iron Mountain offers the greatest variety of them all. In total, Big Sky offers 3,600 wonderful acres of skiing terrain, characterized by 400 annual inches of snow cover, nearly non-existent lift lines and breathtaking scenery.

Big Sky Village

Characterized by its relaxing pace, Big Sky's Mountain Village lies nestled at the base of Lone Peak. Here, you'll find a variety of shops, restaurants, and nightlife for your après ski entertainment. And, when you're not skiing or riding the "cold smoke", Big Sky offers a plethora of winter alternatives like snowmobiling and wildlife viewing in Yellowstone Park, snow-shoeing, sleigh ride dinners, ice skating, free children's activities, and relaxing treatments at the Solace Spa.

Big Horn Condominiums

These units are spacious, well-planned and especially comfortable for groups. Enjoy views of Lake Levinsky and Lone Mountain. Check in at the Summit Hotel. Complex is across the street from Bear Back Poma Lift and under 1/4 mile to Mountain Village Center.





2012 Race Schedule

Perfect North race times, Saturday 10:30 and 1:00, Sunday 10:00 and 11:30.

Paoli Peaks race times, Saturday 10:30 and 1:00, Sunday 9:30 and 11:00

All Mad River races start at 10:00

Race times are tentative. Check in lodge upon arrival.

Race formats (GS, SL, etc.) are subject to conditions and course availability.

<u>Date</u>	<u>Location/Format</u>	<u>Host Club</u>
January 7	Perfect North, IN-two GS	Cincinnati
January 8	Perfect North, IN-GS/SL	Cincinnati
January 21	Paoli Peaks, IN-two GS	Louisville
January 22	Paoli Peaks, IN-GS/SL	Louisville
January 28	Mad River, OH-MR Open Single SL/Dual GS	Columbus
January 29	Mad River, OH-MR Open Figure 11/GS	Columbus
February 4	Perfect North, IN-two GS	Cincinnati
February 5	Perfect North, IN-two GS <i>Mike Robbins Memorial Race additional fee</i>	Cincinnati
February 11	Paoli Peaks, IN-two GS	Lexington/Frankfort
February 12	Perfect North, IN-GS/SL	Lexington/Frankfort
February 18	Mad River, OH-Dual GS	Columbus
February 19	Mad River, OH-GS/SL	Columbus
February 26	Perfect North, IN <i>King/Queen of the Hill</i>	Non-OVSC
March 2-4	WVa Governor's Cup Race	OVSC Weekend Trip Timberline, WVa
March TBA	NASTAR Nationals	Winter Park, CO

Accommodations (request OVSC discount rates, where applicable)

For Perfect North Races: Quality Inn & Suites Airport (NKy), 1-275 Mineola Pike, 859-746-0300

For Paoli Peaks Races: Comfort Inn Suites, French Lick, IN, 812-936-5300; additional options (no special rates)-Lane's Motel, French Lick, IN, 812-936-9919; Big Splash Motel and Water Park, 877-936-3866; and French Lick Springs Resort, 812-936-9360.

For Mad River Mountain Races: Comfort Inn, Marysville, OH, 937-644-0400

For WVa Governor's Cup Races: OVSC Week-End Package; Contact Stephanie Kibbey at smkibbey@sbcglobal.net

2011-12 LSSC Board of Directors

Catherine Monzingo President, camonzingo@yahoo.com
Charlie Lisle – President-Elect, clisle1512@aol.com
Janet Jones– Past President, jgjones@uky.edu
Howard Glauert– Executive VP, hglauert@uky.edu
Dan Geiger– Local VP, dan.geiger@insightbb.com
Janet Jones– Secretary, jgjones@uky.edu
Jon Seaman– Treasurer, jseaman@cecilseaman.com
Mary Harbour– Social, mary.harbour@uky.edu
Jan Clark– Newsletter, janclark@roadrunner.com
Marty Donaldson– Membership, marse50@insightbb.com
Dianna Miller– Publicity/Marketing, hagski@aol.com
Grant Stephens- Webmaster, rgsteph@gmail.com

Lexington Ski & Sports Club, Inc.
P. O. Box 22375
Lexington, KY 40522-2375
www.lexskisports.org